

seeglass run®



Creating usable spaces with
unlimited views



FRAMELESS SLIDING GLASS SELF-CLOSING SYSTEM



Seeglass-run is an ideal glass system solution for places where you do not want to invade the inside space, like restaurants, terraces and commercial spaces. This system offers the possibility of moving panels, horizontally to one or both sides. Thanks to specially designed panel caps, when the first panel is opened or closed it pulls the rest of the panels so they can be moved as a unit.



System height:
Up to
3000 mm



Panel width:
Up to
1100 mm



High quality
bearings.
Support
up to
80 kgs



Tested on
more than
40 000
cycles of
opening to
maximum
load



Easy and
quick adjust-
ment of the
panels by
using lower
adjustment
screws

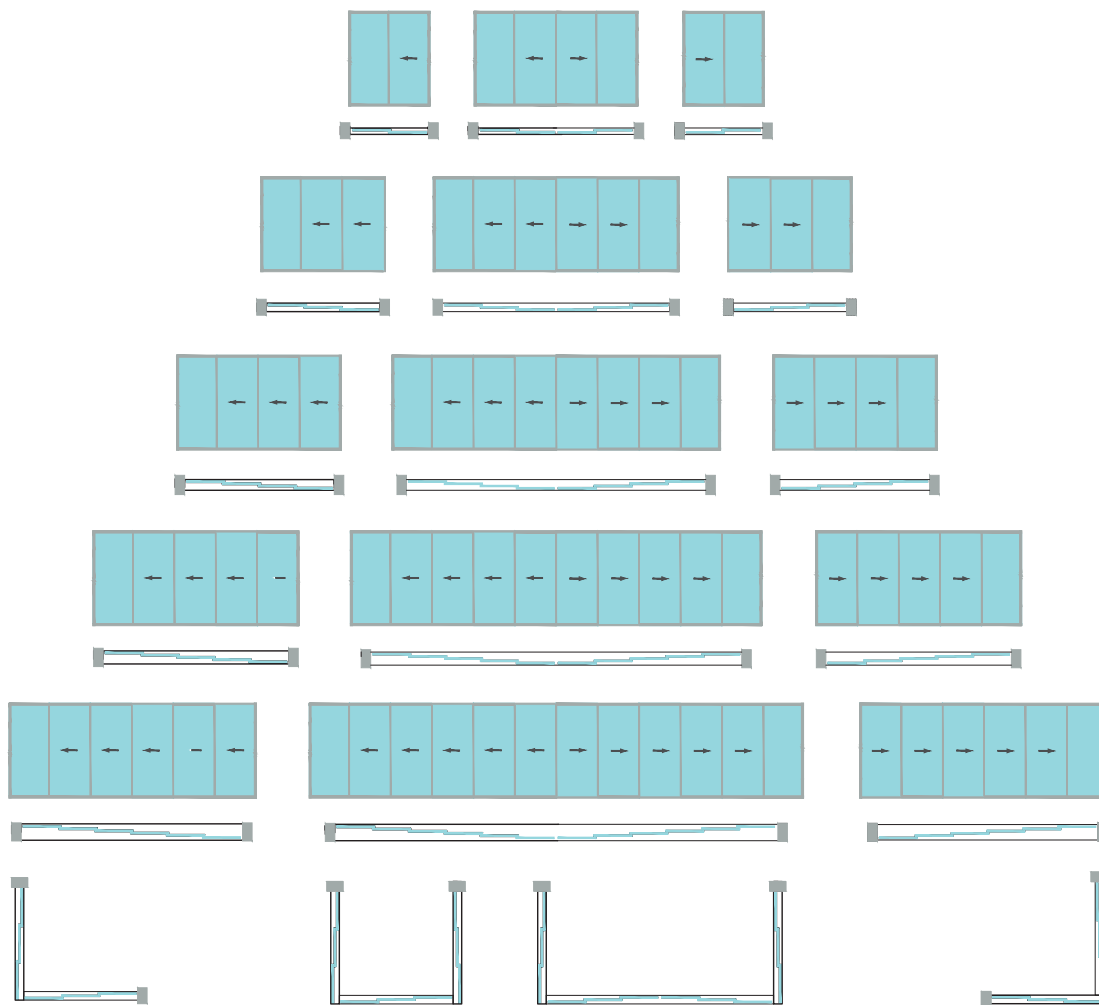


Panel
rollover
stop
system



Forced
opening
protection

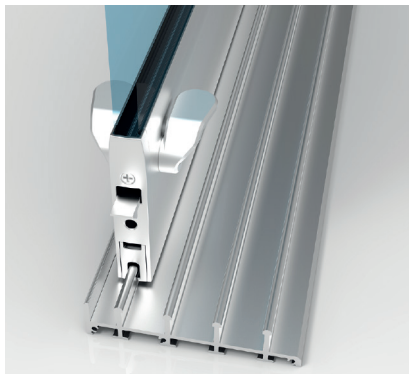
CONFIGURATIONS



PRODUCT BENEFITS

-  Simple and reliable system.
-  Easy cleaning and low maintenance.
-  It does not invade interior space.
-  Perfect integration.
-  Panoramic vision.
-  Protection against inclement weather.
-  Easy installation and handling.
-  High-quality product.
-  Variety of applications.
-  It allows to reuse space.
-  It extends furniture's lifespan.
-  It reduces space maintenance.

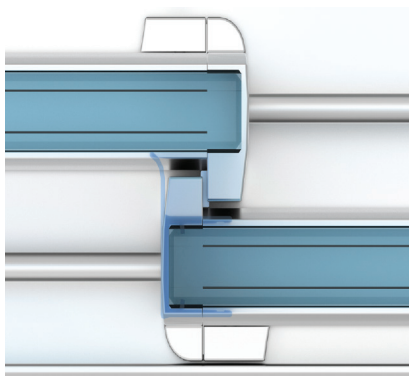
SPECIAL FEATURES



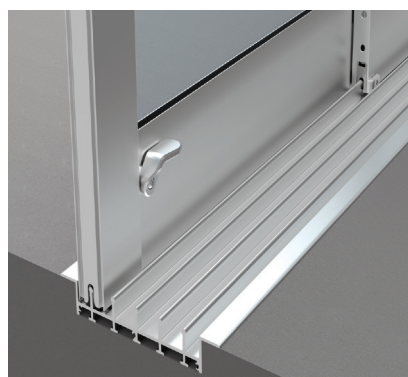
DOUBLE OPENING DEVICE:
Option to choose inside / outside opening device.



FINISH:
Available colours:
-Matt Chrome
-White
-Black
-Silver



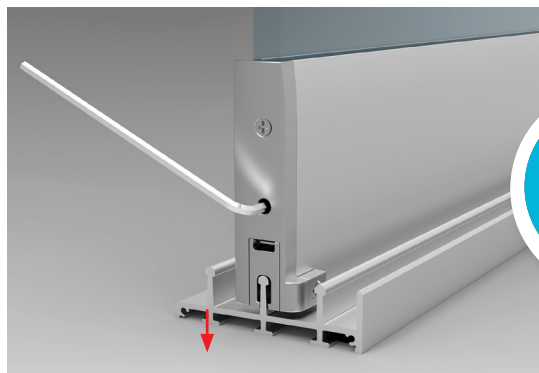
GASKETS:
High quality PVC gaskets have been added to proof against leaks without affecting the aesthetic of the system.



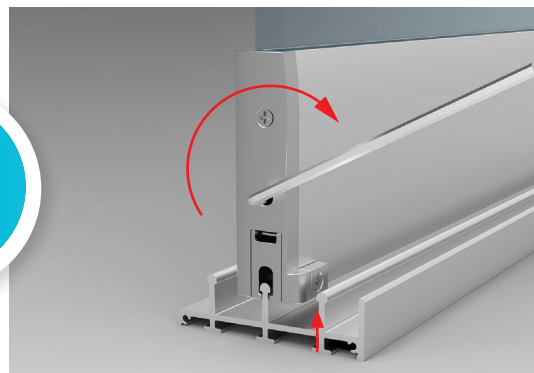
EMBEDDED PROFILE:
Useful option for places where unobstructed access is needed.

EASY INSTALLATION

Possible adjustment on bearings allows easy installation and assures proper panel movement.



UP TO 5 mm
REGULATION



AVAILABLE OPENING DEVICES



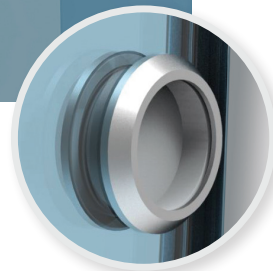
SIMPLE KNOB / DOUBLE FIXED KNOB:
Standard opening device for SG RUN system.

FINISH:
Matt Chrome.



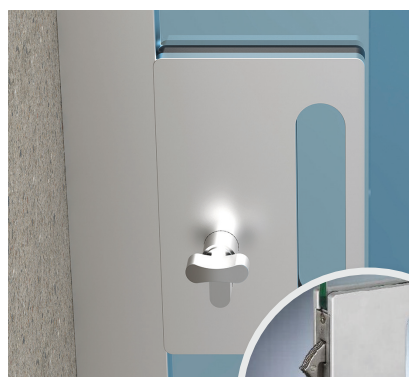
RING HANDLE:
Round opening device.

FINISH:
INOX.



S-4 LOCK:
Lock with a key on the outside and knob on the inside.

FINISH:
Matt Chrome or Polished Chrome.



S-6 LOCK:
Locking device with either 2 keyholes on both sides, or outside key outside and inside knob.

FINISH:
Shine or Matt Chrome and INOX look.



LOCKING SYSTEMS

In order to achieve a complete closure and greater security, you can choose between two locking systems:

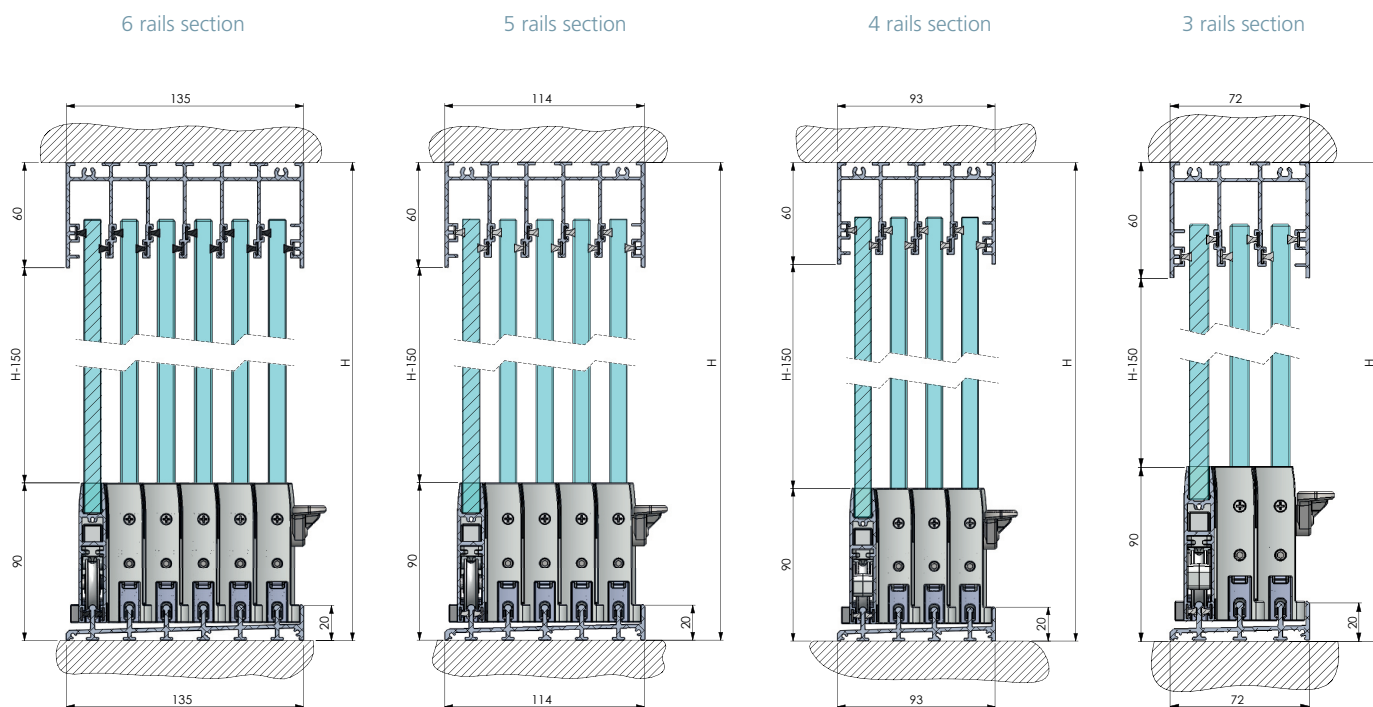


AUTO-LOCK:
Standard opening system that unlocks only from the inside.

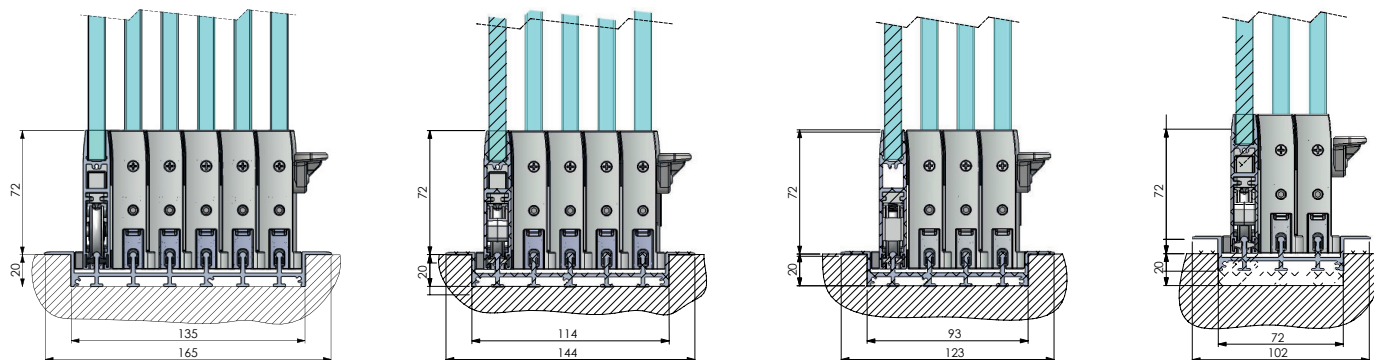


LOWER LOCK:
Optional opening system, with contact lock that allows to open with the foot. With this option, the lateral finishing is not necessary.

SYSTEM DETAILS - SURFACE OPTION



SYSTEM DETAILS - EMBEDDED OPTION



TECHNICAL FEATURES SEEGLASS-RUN

Number of rails	3	4	5	6
Type of lower rail	ELEVATED (20mm) or EMBEDDED (20mm)			
Type of glass	TEMPERED 10mm or 8mm			
Maximum system height	3000 mm for 10 mm and 2300 for 8 mm			
Maximum system width	UNLIMITED			
Maximum panel width	1100 mm*			
Glass grip	TAPED			
Opening type	SLIDING			
Weight location	WEIGHT IN LOWER FRAME			
Available finishes	ANODISED, RAL COLOURS AND WOOD EFFECT			

NEW

NOW AVAILABLE
IN 8mm

*Depending on system height, maximum panel width may vary.

GUARANTEE

Glass enclosing system **seeglass-run** is entirely produced in Spain. All the components are designed and manufactured by C3 Systems S.L.

This product has been tested according to the European standards for waterproof and wind resistance.



seeglass-run has a CE mark, as we endorse the production properly sealed and signed.



seeglass-run complies with international requirements for aluminium powder coating **Qualanod**, **Qualideco** and **Qualicoat**.

Documento N° 239854

Hoja 1 de 7

RESISTENCIA A LAS CARGAS DE VIENTO.

Empresa: C3 SYSTEM, S.L.
C/ Juan De Herrera nº 34, Parque Industrial
03203 - Elche, Alicante.

Producto: Cerramiento corredero.

Modelo: Serie: SEEGLASS RUN V2

Fabricante: C3 SYSTEM, S.L.

Dimensiones (AnxAl): 2100 mm x 2400 mm

Material: Aluminio L-6063 / EN5 A2MgB, 90

Acristalamiento: Vidrio 10 mm monolítico incoloro
FLOAT Templado.

Fecha de Ensayo: 09.10.2015

Resistencia a la carga de viento CLASE

CE
Organismo Notificado N° 1008

Este documento certifica y valida los resultados obtenidos en el ensayo.
Para una adecuada identificación de las características del material ensayado y de los resultados obtenidos en el ensayo, se dispone de la documentación adjunta.

Este documento es propiedad de C3 SYSTEM, S.L. y no puede ser reproducido sin su consentimiento.

Este documento es propiedad de C3 SYSTEM, S.L. y no puede ser reproducido sin su consentimiento.

Documento N° 239855

Hoja 1 de 9

ENSAYOS DE PERMEABILIDAD AL AIRE Y ESTANQUEIDAD AL AGUA

Empresa: C3 SYSTEM, S.L.
C/ Juan De Herrera nº 34, Parque Industrial.
03203 - Elche, Alicante.

Producto: Cerramiento corredero.

Modelo: SEEGLASS RUN V2.

Dimensiones (AnxAl): 2100 mm x 2400 mm

Material: Aluminio L-6063 / EN5 A2MgB, 90

Acristalamiento: Vidrio 10 mm monolítico incoloro
FLOAT Templado.

Fecha de Ensayo: 09.10.2015

Permeabilidad al aire CLASE 1

Estanqueidad al agua CLASE 1A

CE
Organismo Notificado N° 1008

Este documento certifica y valida los resultados obtenidos en el ensayo.
Para una adecuada identificación de las características del material ensayado y de los resultados obtenidos en el ensayo, se dispone de la documentación adjunta.

Este documento es propiedad de C3 SYSTEM, S.L. y no puede ser reproducido sin su consentimiento.

Este documento es propiedad de C3 SYSTEM, S.L. y no puede ser reproducido sin su consentimiento.



Finishes available in **RAL**, **anodised** and **Wood effect**.



MADE IN SPAIN



C3 Systems, S.L. · Juan de Herrera, 39 · Elche Parque Industrial · 03203 Elche (Alicante) España · Tlf. +34 966 286 186 · Fax: +34 965 682 677
c3systems@c3systems.es · www.c3systems.es · www.seeglass.es



The purpose of this document is to meet a commercial function. It does not constitute an authentic advertising offer in a "strict" sense. If you would like to formalise a contract, please contact C3 Systems, SL in order to offer you specific and personalised information that contains objective information regarding relevant characteristics. This means it will constitute an offer in a "strict" sense.

C3 Systems S.L. commits not to make misleading advertising by this means. To these effects, therefore, formal or numerical errors that could be found in the content of this document are not considered as misleading advertising, in particular regarding to the images accompanying in an illustrative way, and not contractual. In any case C3 Systems SL commits to correct it as soon as it becomes aware of such errors.